

# Impact and Productivity of PhD Graduates of Computer Science/Engineering Departments of Hellenic Universities

Dimitrios Katsaros Yannis Manolopoulos

**Abstract**—This article presents an anatomy of PhD programmes in Hellenic universities' departments of computer science/engineering from the perspective of research productivity and impact. The study aims at showing the dynamics of research conducted in computer science/engineering departments, and after recognizing weaknesses, to motivate the stakeholders to take actions that will improve competition and excellence. Beneficiaries of this investigation are the following entities: a) the departments themselves can assess their performance relative to that of other departments and then set strategic goals and design procedures to achieve them, b) supervisors can assess the part of their research conducted with PhDs and set their own goals, c) former PhDs who can identify their relative success, and finally d) prospective PhD students who can consider the efficacy of departments and supervisors in conducting high-impact research as one more significant factor in designing the doctoral studies they will follow.



## 1 INTRODUCTION

Nowadays the availability of rich bibliometric data in on-line databases such as Google Scholar, Elsevier Scopus, Thomson Reuters WoS allows for the data-centric study of the performance of various entities participating and shaping the research landscape. In an increasing fashion, decision makers related to promotions, funding, strategic orientation are asking for the exploitation of these data concerning 'individuals' (ranging from scientific articles to PhD students, post doctorals, faculty members), as well as 'collections of individuals' (ranging from journals, to universities, institutions, companies) to backup their decisions. There is really huge literature on this topic of data-centric (bibliometric) evaluations, and it is not within the scope of the present article to survey them (even in a brief manner); instead it directs the interested reader to begin his/her investigation from a couple of recent books [22], [28]. The use of such quantitative measures in research evaluation is under constant debate; for a discussion on the benefits and dangers of research evaluation using bibliometric methods, the reader is directed to [8] and [18].

Departing from all previous national and international studies we investigate in this article the performance of both individuals and organizations from the perspective of PhD studies. In particular, we compare in terms of productivity, impact and a proxy of both productivity and impact (with the *h*-index [10]), the lifetime performance of PhDs of Hellenic universities' departments of computer science/engineering, and based on that analysis, we evaluate the success of their supervisors and of the respective departments. The salient hypothesis in our study is that the future success of a PhD has its origins (at a significant degree) in his/her PhD studies. This hypothesis does not precludes the positive assessment of PhDs who never followed a research career after their graduation, because their impact still continues to 'grow' and their work can still attract in-

terest, in case it was influential and innovative. On the other hand, this hypothesis does not preoccupies the positive assessment of PhDs who followed/follow research careers, because their current quantifiable performance might show strong evidence of moderate or even low performance.

The motivation of this study stems from authors' personal interest and their belief that several stakeholders can benefit from this investigation. In particular, the departments can assess their relative performance and then set strategic goals and design procedures to improve themselves and promote competition and excellence. Supervisors can assess the part of their research conducted jointly with PhDs and set their own goals for self-improvement and excellence. Former PhDs can identify their relative success and draw conclusions to use in their current jobs, and finally prospective PhD students can consider the efficacy of departments and supervisors in conducting high-impact research as one more significant factor in designing the path in their doctoral studies.

The rest of this article is organized as follows: Section 2 describes which departments are evaluated here; Section 3 presents some gross statistics and establishes the soundness of the present investigation; Section 4 shows the results which concern the performance of the supervisors, and Section 5 gives the details of PhDs' performance; Section 6 which is the heart of the present article, presents the ranking of the departments; Section 7 describes our data collection methodology and its challenges; Section 8 surveys some related work on evaluations of Hellenic universities' departments, and finally Section 9 concludes this article.

## 2 THE EVALUATED DEPARTMENTS

The task of data collection that would feed our study turned out to be quite tough; the challenges are described in Section 7. We ended up having available data for 15 university departments, which are shown in Table 1 sorted according

to their key. In the rest of the article, this key will be used as the name of the respective department.

Key	Department's name	Location
AEGEAN_ICSD	Department of Information & Communication Systems Engineering	Samos
AUEB_DI	Department of Informatics	Athens
AUTH_DI	Department of Informatics	Thessaloniki
AUTH_ECE	Department of Electrical & Computer Engineering	Thessaloniki
CRETE_CSD	Computer Science Department	Heraklion
CRETE_ECE	Department of Electrical & Computer Engineering	Chania
IOAN_CSE	Department of Computer Science & Engineering	Ioannina
IONIO_DI	Department of Informatics	Corfu
NTUA_ECE	Department of Electrical & Computer Engineering	Athens
PATRAS_ECE	Department of Electrical & Computer Engineering	Patras
PELOP_DI	Department of Informatics and Telecommunications	Tripoli
UA_DI	Department of Informatics and Telecommunications	Athens
UNIPI_DI	Department of Informatics	Piraeus
UTH_DIB	Department of Computer Science and Biomedical Informatics	Lamia
UTH_ECE	Department of Electrical & Computer Engineering	Volos

TABLE 1

Departments studied and their respective key used to represent the department in the plots.

Eight of them are departments which belong to the faculty of sciences in their university (we will call them collectively the ‘science departments’), and the rest belong to the faculty of engineering of their university (we will call them the ‘engineering departments’). Six out of fourteen departments reside in the three major Greek cities, namely Athens, Thessaloniki and Piraeus, and we will call them ‘the central departments’, whereas the rest – called ‘the peripherals’ – reside in various Greek cities, both in the mainland and in islands. Figure 1 shows the geographical location of the evaluated departments.



Fig. 1. Geographical distribution of evaluated departments.

Table 2 shows the time span covered by *our data* for each department. This interval does not necessarily coincides with the interval that the respective department has been awarding PhDs. The table also shows the total number of PhDs awarded during that interval.

In other words, we used the productivity and impact data of 2328 PhDs awarded from 15 departments to carry out evaluation involved persons (PhDs and PhDs supervisors) and departments. Our two measures of efficiency are

Department	Time span of graduations	#PhDs awarded
AEGEAN_ICSD	1997–2016	31
AUEB_DI	1997–2017	77
AUTH_DI	1997–2016	131
AUTH_ECE	2005–2016	173
CRETE_CSD	1992–2016	75
CRETE_ECE	1992–2017	43
IOAN_CSE	2005–2017	43
IONIO_DI	2011–2016	11
NTUA_ECE	1993–2016	1036
PATRAS_ECE	1984–2017	341
PELOP_DI	2006–2017	23
UA_DI	2005–2017	208
UNIPI_DI	1991–2017	88
UTH_DIB	2013–2017	6
UTH_ECE	2006–2017	42
<b>TOTAL</b>		<b>2328</b>

TABLE 2

Time span of graduations for each department, and number of PhDs graduates covered by our data.

*productivity* and *impact*. When the term ‘productivity’ is used to describe the output of a department or a supervisor, then it refers to the number of awarded PhDs, but when it is used to describe the output of a PhD, then it means the number of articles authored by this PhD. We measured the impact of both persons and departments in terms of the number of *citations*. Should we had more rich data, we could quantify the impact in terms of the prestige of jobs acquired after graduation, in terms of the number of patents granted, in terms of average salaries, and so on. However, in this study, we follow the standard bibliometric model by means of citation counting.

We will start presenting our results in the next section by showing how the productivity of each department collectively varies with time, and we will argue about the validity of our methodology to compare PhD programmes that have started in different time instances.

### 3 A MACROSCOPIC VIEW OF PRODUCTIVITY

Figures 2 and 3 depict the distribution of awarded PhDs per year and per department for the science and engineering departments, respectively. For comparison purposes, we include in each plot the average number of PhDs over *all* departments, i.e., both science and engineering. The numbers in the plots are absolute numbers without any normalization, e.g., per department’s faculty size, because the size and composition of faculty members set varies considerably with time, even during the course of a PhD thesis development. In other words, these plots depict the ‘productivity’ of the departments in terms of PhD awardees.

Obviously, the engineering departments award more PhDs, because they are older and thus they have a) more faculty members, and b) more ‘scientifically mature’ faculty members. The first PhD graduates from science departments appear in 1991, compared to 1984 from engineering departments. The generic trend is that the number of PhDs increases with time. We speculate that this is partly due to social reasons (e.g., increased social recognition), and also due to the availability of more funding by the Greek state. This trend was quit steep during the

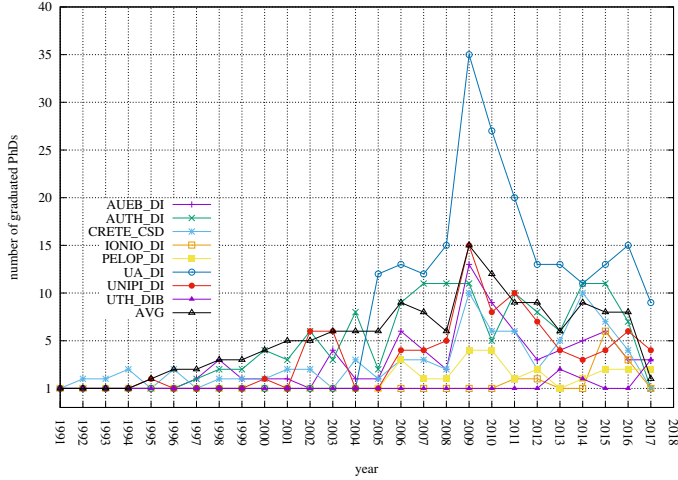


Fig. 2. Number of PhD graduates from science departments. The average (AVG) is calculated across all departments.

years 1995 – 2009 (see Figure 4), and in general during the decade of 2000, but it declines during the years of recession. We can see that the number of PhDs drops during the years 2014 – 2015, compared to the respective number during the period 2009 – 2010. Assuming that a PhD takes 4 years to complete, this means that: a) less people are pursuing PhD studies during the economic recession, and/or b) departments have less faculty members, and/or c) faculty members are not willing to supervise many PhD students, and/or d) faculty members have received less funding, in particular from Greek state agencies.

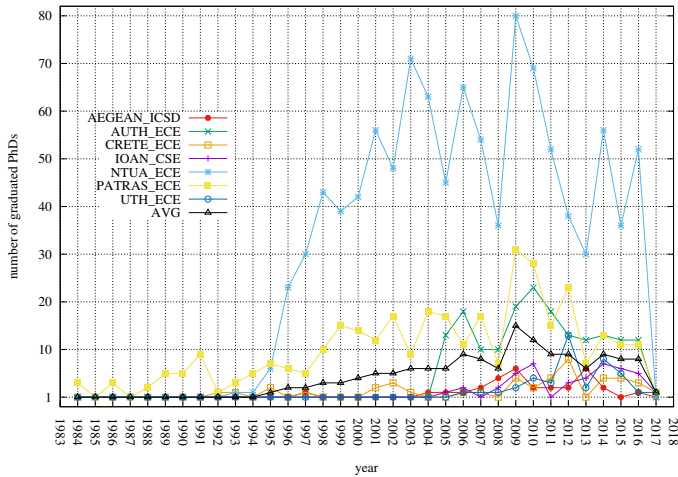


Fig. 3. Number of PhD graduates from engineering departments. The average (AVG) is calculated across all departments.

A couple of science departments, namely AUTH\_DI and UA\_DI are constantly very close or above the average, and the three major engineering departments, namely NTUA\_ECE, PATRAS\_ECE and AUTH\_ECE are clearly above the average. Looking at the growth pattern, we can observe that almost all (except from the very small UTH\_DIB) science departments follow the same growth pattern, but only the two major engineering departments (NTUA\_ECE and PATRAS\_ECE) follow their own pattern.

The average values (depicted in Figure 2-3) show more

clearly than Figure 4 the gradual decline (mainly after 2012) of awarded PhDs, as consequence of the economic recession.

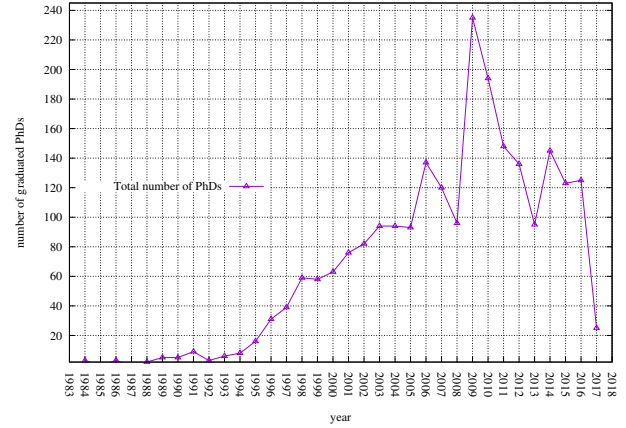


Fig. 4. Total number of PhD graduates. The data are incomplete for year 2017.

Next, we investigate an issue that comprises the stepping stone for the ranking results presented in Sections 4, 5 and 6. We will investigate the correlation between ranking by impact and ranking by graduation year for the PhDs per department. If there is a *strong positive* correlation, then any ranking scheme is practically worthless, and we cannot recognize any excellence and difference in quality among competitors, because the evolution is governed by the principle of the *first-mover's advantage*. On the other hand, if the correlation is close to 0 or at most 0.5, then this article's results on rankings are sound. In general, this question is fundamental in network science research, and represents the battle among *the rich gets richer* [5] and *the fittest survives* [6] principles of evolution.

We use the Kendall's  $\tau$  rank correlation coefficient [16] to demonstrate how a specific ranking is correlated to another ranking. Here, the Kendall's tau coefficient considers the list produced by sorting the PhDs according to their graduation year (the least recent PhDs first), and the list produced by sorting the PhDs according to the total number of citations their articles have accumulated. Note that both lists are of the same size i.e.,  $n$ . Then, the  $\tau$  value can be computed as:

$$\tau = \frac{n_c - n_d}{n(n-1)/2} \quad (1)$$

where  $n_c$  is the number of concordant pairs, and  $n_d$  is the number of discordant pairs. The denominator is the total number of pairs of  $n$  items in the lists. For each pair of items in the list, we determine if the relative rankings between the two lists match. For pair of nodes  $(i, j)$ , if node  $i$  is ranked above (or below) node  $j$  in both lists, then the pair is called *concordant*. Otherwise, it is called *discordant*. Clearly,  $-1 \leq \tau \leq 1$ . If  $\tau = 1$ , then the two rankings are in perfect agreement; if  $\tau = -1$ , then one ranking is the complete reverse of the other. In the ranking list based on the graduation year, there are a lot of ties. Therefore, we used as tie breaking criterion the lexicographic ordering of the PhDs' surnames which is a neutral criterion. Should we have used the non-increasing number of citations, the correlation coefficient would be slightly higher; if we had used the non-decreasing

number of citations, then the correlation coefficient would be slightly lower.

Table 3 presents the correlation of rankings based on graduation year and impact for the PhDs in each department. We observe that in most of the cases (eleven out of fifteen, the correlation coefficient is less than or equal to 0.5; this implies that the correlation among the rankings is not strong (in a positive way). There are a several cases where the coefficient is very close to 0 (approaching it either from left or right) meaning that the two rankings are completely uncorrelated. We have even encountered two cases (NTUA\_ECE and UTH\_ECE) where the coefficient is negative, which affirms that recent PhDs are (slightly) more impactful, on the average.<sup>1</sup> The only cases, where the correlation can be considered strongly positive are for IONIO\_DI and PEL\_DI which however have not awarded many PhDs and thus the statistical sample is not significant. The correlation is very low, i.e., 0.08 if we consider it across all departments. Therefore, we establish that *graduation year and impact are not strongly correlated* to each other in a positive or negative way, which is an intuitive result whatsoever.

Department	Kendal $\tau$
AEGEAN_ICSD	0.27
AUEB_DI	0.17
AUTH_DI	0.37
AUTH_ECE	0.34
CRETE_CSD	0.40
CRETE_ECE	0.50
IOAN_CSE	0.58
IONIO_DI	0.63
NTUA_ECE	-0.04
PATRAS_ECE	0.03
PELOP_DI	0.71
UA_DI	0.39
UNIPI_DI	0.11
UTH_DIB	0.54
UTH_ECE	-0.03
ALL_DEPTS	0.08

TABLE 3

Correlation between graduation year and impact of PhDs per department. The results do not show a strong correlation among them.

Having established that the graduation year is not really significant to impact, we will refrain from performing any time-based normalization in the results shown in the next sections. The next section presents results about the productivity- and impact-based evaluation of supervisors.

#### 4 PERFORMANCE OF SUPERVISORS

We start our discussion by presenting some plain statistics regarding the number of distinct supervisors, and the average number of PhDs supervised by each one of them in all departments. The first issue we need to consider is whether the study should present the data in a(ny) normalized way. For instance, we could show the average number of PhD graduates of a particular supervisor, where the average

1. For the case of NTUA\_ECE, we need to mention that the magnitude of this negative value might be due to fact that 70% (30 out of 43) of NTUA's unavailable Scopus profiles (cf. Table 29) is for NTUA\_ECE PhDs who have graduated on or before 2001. However, this is not the case for UTH\_ECE, where all PhDs are very recent (after 2006) and our data are complete, i.e., there are no missing Scopus profiles.

would be over the time period starting from the year of first graduate's graduation to the year of the last graduate's graduation. We explained in Section 3 why we do not adopt this approach. Moreover, there is a second reason for this; such an approach would bias the results towards supervisors who are 'active' for very short periods of time. It would be fairer to normalize over the whole period of the supervisor's appointment to the specific department; however, this information is not available. Thus, for the supervisors we choose to present raw 'productivity' performance results, but normalized over the number of graduated PhDs for the impact performance results.

Table 4 depicts the number of faculty members that have supervised at least one PhD graduate in each department. We cannot translate these numbers into percentages of the total number of faculty members in each department, because we are lacking the respective data. Besides, the number of faculty members in each department varies with time. Comparing the departments AUTH\_DI, AUEB\_DI and CRETE\_CSD with similar number of supervisors, we observe that the former department' supervisors are twice as productive as the other two departments.

Department	#distinct supervisors	avg #PhDs per supervisor
AEGEAN_ICSD	8	3.87
AUEB_DI	25	3.08
AUTH_DI	22	5.95
AUTH_ECE	42	4.11
CRETE_CSD	25	3
CRETE_ECE	20	2.15
IOAN_CSE	17	2.52
IONIO_DI	6	1.83
NTUA_ECE	89	11.64
PATRAS_ECE	52	6.55
PELOP_DI	9	2.55
UA_DI	41	5.07
UNIPI_DI	18	4.88
UTH_DIB	5	1.2
UTH_ECE	12	3.5
<b>TOTAL</b>	<b>391</b>	

TABLE 4

Number of faculty members per department that have supervised at least one PhD graduate.

Concerning the top-productive supervisors, in Table 5 we present the top-3 for each department, whereas in Table 6 we present the top-10 across all departments. There are cases where the same person-supervisor has supervised PhDs in different departments; this is the case for instance of prof. Courcoubetis who has supervised PhDs graduates in CRETE\_CSD and AUEB\_DI. We do not aggregate these numbers, and ask for the understanding of our esteemed colleagues whose statistics might be slightly affected by this decision.

Table 6 shows the top-10 productive supervisors across all departments. It is expected, and at the same time frustrating for the rest of the departments, to see that only supervisors coming from NTUA\_ECE — which however is the biggest, oldest department — populate this list.

In the series of plots in Figure 5, we illustrate the distribution of awarded PhDs per supervisor, after ranking the supervisors from the most to the least productive. There are some departments which illustrate a phenomenon where

Department	top-1	top-2	top-3
AEGEAN_ICSD	Gritzalis, S. (13)	Kormentzas (4)	Kambourakis (3) Loukis (3)
AUEB_DI	Vazirgiannis (10)	Gritzalis, D. (9)	Giannakoudakis (7)
AUTH_DI	Manolopoulos (18)	Pitas (15)	Vlachavas (14)
AUTH_ECE	Mitkas (11) Pavlidou (11) Srintzis (11)	Tsiboukis (10)	Bakirtzis (9)
CRETE_CSD	Markatos (8)	Plexousakis (7)	Stylianou (6)
CRETE_ECE	Zervakis (7)	Papaefstathiou (4)	Dollas (3) Kalaitzakis (3) Stavarakakis (3)
IOAN_CSE	Lykas (6)	Nikou (5)	Fudos (4) Nikolopoulos (4)
IONIO_DI	Vlamos (5)	Andronikos (2)	Chrissikopoulos (1) Pateli (1) Sioutas (1) Stefanidakis (1)
NTUA_ECE	Uzunoglou (53)	Stasinopoulos (47)	Protonotarios(43)
PATRAS_ECE	Goutis (24)	Papadopoulos (23)	Fakotakis (19)
PELOP_DI	Simos (7)	Vassilakis (5)	Vlachos (3)
UA_DI	Theodoridis, S. (23)	Merakos (18)	Sivridis (13)
UNIPi_DI	Alexandris (14) Douligeris (14)	Virvou (9)	Foundas (7) Tsihrintzis (7)
UTH_DIB	Bagos (2)	Aletras (1) Anagnostopoulos (1) Maglogiannis (1) Plagianakos (1)	—
UTH_ECE	Tassioulas (14)	Stamoulis, G.I. (10)	Houstis, E. (4)

TABLE 5

Top-3 productive supervisors per department. The number in parenthesis is the number of PhDs graduates supervised by the respective person.

#PhDs	supervisor	Department
53	Uzunoglou	NTUA_ECE
47	Stasinopoulos	NTUA_ECE
43	Protonotarios	NTUA_ECE
36	Kollias	NTUA_ECE
32	Sykas	NTUA_ECE
29	Koutsouris	NTUA_ECE
28	Venieris	NTUA_ECE
27	Konstantinou	NTUA_ECE
26	Theologou	NTUA_ECE
25	Varvarigou	NTUA_ECE

TABLE 6

Top-10 productive supervisors across all departments.

very few supervisors account for the majority of awarded PhDs. Such departments are the following: a) AUEB\_DI, where the top-3 accounts for more than 33% of all PhDs ( $10 + 9 + 7 = 26$  out of 77), b) AUTH\_DI, where the top-3 accounts for more than 35% of all PhDs ( $18 + 15 + 14 = 47$  out of 131), and c) UTH\_ECE, where the top-3 accounts for more than 66% of all PhDs ( $14 + 10 + 4 = 28$  out of 43). Various factors can explain this observation; for instance, the high discrepancy in ‘scientific quality’ among the faculty members, and/or the significant discrepancies in ‘seniority’ among faculty members, and/or unequal funding among faculty members. On the other hand, there exist departments such as CRETE\_CSD, AUTH\_ECE, PATRAS\_ECE, which present a more uniform distribution pattern.

Figure 6 depicts the histogram of supervisors’ productivity, i.e., how many supervisors ( $y$ -axis) have supervised a specific number ( $x$ -axis) of PhDs. The curve is highly skewed; we can see that 204 ( $= 91 + 63 + 50$ ) out of 391

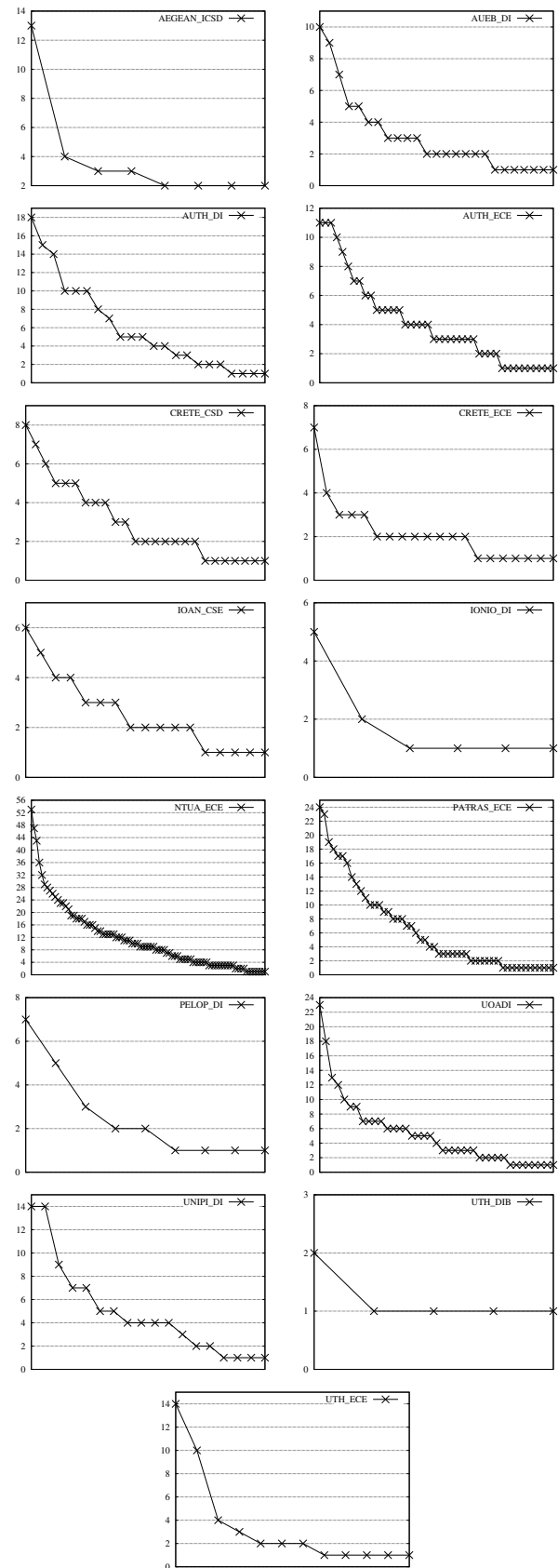


Fig. 5. Distribution of graduated PhD graduates per supervisor and per department.

supervisors, i.e., more than 52%, have supervised at most three PhDs. On the other hand, 18 supervisors (4.46%) have

supervised 527 PhDs (22.6%) – those at the far right end of  $x$ -axis (with value greater than 20).

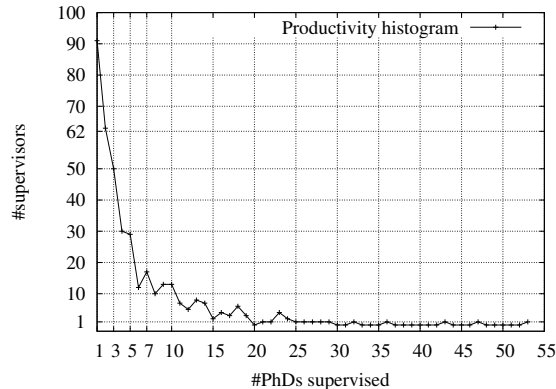


Fig. 6. Supervisors' productivity: number of supervisors ( $y$ -axis) as a function of the number of PhD graduates ( $x$ -axis).

Before proceeding to show the results about the top- and lowest-impact supervisors, we need to stress that these results *do not* necessarily reflect the scientific quality of the respective scientists. There are several reasons behind that, e.g., a) the supervisor does not conduct his/her research mainly with PhDs, but with post-doctoral researchers, with other faculty members, with research institutions' or industrial personnel, b) the underperformance of the PhD, c) his/her research via PhDs has not received attention yet, but it will in the future, and so on.

Concerning the top- and lowest-impact supervisors, we present in Table 7 the top-3 – by total number of citations normalized to the number of PhDs (rounded to the closest integer value) for each department, and in Table 8 the lowest-3. The selection of top- and lowest-performers was done among those who have supervised at least three PhDs; we feel that this is rational decision. Thus, we would not show as top-performer, for instance, someone who has supervised, say two PhDs and both of them are in the top-2 of a PhDs ranked list. Similarly, we would show as low-performer someone who has supervised, say three PhDs instead of someone with two PhDs irrespectively of their PhDs' performance. One could challenge our decision by arguing that it is better to have supervised three PhDs with average or low impact compared to having supervised only one with high impact, and so on.

Nevertheless, our decision is based partly on statistical confidence and partly on our experience while processing these data. This latter factor taught us that the performance of PhDs of the same supervisor is relatively consistent i.e., for supervisors that had awarded three or more PhDs, we almost never observed a situation where a single PhD was responsible for the *vast* amount of productivity or impact of that specific supervisor; we encountered many cases where some PhD was by far the best of that supervisor, but not orders of magnitude better than the rest of the PhDs of that supervisor. At this point, we need to emphasize that this is the main reason that we have used 'averages' to quantify

the impact of a supervisor.<sup>2</sup>

Dept	top-1	top-2	top-3
AEGEAN_JCSD	Kormentzas (296)	Gritzalis (117)	Kambourakis (102)
AUEB_DI	Kiountouzis (411)	Vazirgiannis (369)	Giannakoudakis (306)
AUTH_DI	Pitas (686)	Manolopoulos (518)	Vlahavas (477)
AUTH_ECE	Strintzis (454)	Karagiannidis (332)	Tsiboukis (298)
CRETE_CSD	Orphanoudakis (1074)	Tziritas (925)	Konstantopoulos (425)
CRETE_ECE	Kalaitzakis (1055)	Stavarakakis (803)	Zervakis (250)
IOAN_CSE	Pitoura (273)	Lagaris (227)	Lykas (192)
IONIO_DI	Vlamos (99)	—	—
NTUA_ECE	Papadopoulos (1060)	Sellis (972)	Hizanidis (640)
PATRAS_ECE	Groumos (1307)	King (689)	Kotsopoulos (319)
PELOP_DI	Simos (516)	Vassilakis (39)	Vlachos (18)
UA_DI	Ioannidis (411)	Syvridis (410)	Paschalis (293)
UNIP_LDI	Theodoridis (294)	Virvou (157)	Alexandris (107)
UTH_DIB	—	—	—
UTH_ECE	Houstis E. (270)	Tassioulas (233)	Lalis (108)

TABLE 7

Top-3 impactful supervisors per department. The number in parenthesis is the average number of citations received by his/her PhDs.

A consequence of our decision to consider the value of three supervised PhDs as the threshold to include a supervisor into Tables 7 and 8 is that the former table has no entries for UTH\_DIB (no supervisors has supervised more than two PhDs), and partial entries for IONIO\_DI (only one supervisor has supervised more than two). Additionally, there are empty entries in Table 8 in all cases where a department has less than 6 supervisors with more than three supervised PhDs, because we have used three of them as entries in Table 7.

Department	bottom-1	bottom-2	bottom-3
AEGEAN_JCSD	Loukis (21)	—	—
AUEB_DI	Sideri (16)	Mageirou (59)	Apostolopoulos (99)
AUTH_DI	Demetriadis (81)	Miliou (85)	Lazos (95)
AUTH_ECE	Dokouzyannis (4)	Chrissoulidis (20)	Xenos (36)
CRETE_CSD	Stephanidis (21)	Katevenis (137)	Stylianou (138)
CRETE_ECE	Dollas (79)	Papaefstathiou (86)	—
IOAN_CSE	Kondis (34)	Fudos (35)	—
IONIO_DI	—	—	—
NTUA_ECE	Ioannides Maria (14)	Bourkas (17)	Matsopoulos (26)
PATRAS_ECE	Denazis (31)	Tsanakas D. K.(38)	Paliouras (41)
PELOP_DI	—	—	—
UA_DI	Rondogiannis (27)	Varoutas (28)	Manolakos (31)
UNIP_LPI	Panagiotopoulos, T. (3)	Siskos (4)	Foundas (6)
UTH_DIB	—	—	—
UTH_ECE	Stamoulis G. I.(15)	—	—

TABLE 8

Bottom-3 impactful supervisors per department, normalized per number of supervised PhDs. The number in parenthesis is the average number of citations received by his/her PhDs.

Contrasting Table 7 to Table 5, we observe significant differences for many departments with respect to: a) the identity of supervisors comprising the tables, and b) the relative ranking of supervisors. This is not a surprising result however. The reader can make his/her own detailed observations.

As mentioned before, Table 8 illustrates the lowest-3 supervisors impact-wise per department. We can see that

2. On the contrary, the ranking of universities will be mainly based on median values, instead of means (averages) because of the evident power-law behavior of individual PhD performance with respect to the entire set of PhDs of a department (cf. Section 6).

even supervisors who have appeared in Table 5, are included in this table as well. A very interesting result (which will be explained in Section 6) concerns the significantly higher performance of the low-performing supervisors coming from CRETE\_CSD, CRETE\_ECE and AUTH\_DI; these supervisors have four to five times the performance of their colleagues appearing in Table 8.

Finally, for completeness purposes we include Table 9 to show the worse performing supervisors impact-wise. It seems that UNIFI\_DI appears quite frequently on this list.

avg #citations per PhD	supervisor	Department
3	Panagiotopoulos, T.	UNIFI_DI
4	Dokouzyannis Siskos	AUTH_ECE UNIFI_DI
6	Foundas	UNIFI_DI
11	Assimakopoulos	UNIFI_DI
14	Ioannides Maria	NTUA_ECE
15	Stamoulis G. I.	UTH_ECE
16	Sideri	AUEB_DI
17	Bourkas	NTUA_ECE
18	Vlachos	PEL_DI
20	Chrissoulidis	AUTH_ECE

TABLE 9

Bottom-10 impactful supervisors across all departments.

## 5 PERFORMANCE OF PHDS

As explained in Section 3, impact and graduation year are not strongly correlated, thus we refrain to normalize the results based on time-based parameters. Normalizing by or showing the graduation year is not significant for one more reason; the duration of PhD studies of each PhD is not available to us, and simply normalizing by the year of the first published article will in principle bias the results towards those who were not productive (impactful) during the first year(s) and did all their work during the final year(s) of their PhD studies.

In the  $h$ -index based ranking, we show only those PhDs with  $h$ -index value greater than or equal to 10 (or the highest ranked PhD only, if there is none with  $h$ -index  $\geq 10$ ), because of the too many ties at lower values, and thus the low discriminative power of  $h$ -index at these levels of performance.

Tables 10–24 present for each department the top-10 ranking of the PhDs based on productivity and impact. We are not going to describe in details the table entries for each department, but will only summarize some generic observations.

- Many of the PhDs which made it into top-10 are now faculty members either in their department or other departments in national or international universities. One could argue that their current position explains their successful statistics, or that their statistics were important for their recruitment; we tend to believe that they are both valid explanations.
- Productivity and impact are not correlated, and thus many PhDs ranked high in terms of total number of published articles are found in lower positions when looking at the impact-based ranking.
- Apart from a couple of PhDs with outstanding performance (e.g., Dimitris Papadias, NTUA\_ECE, now

professor at HKUST), we do not recognize substantial differences among the top-performing PhDs relative to impact. This is a qualitative observation, however, that needs to be verified quantitatively in a future work.

- Some departments exhibit far stronger *inbreeding* than others.<sup>3</sup> The analysis of the career paths of PhDs is a very interesting topic on itself. It would be interesting to record percentages of PhDs employed by national or international industries, by national governmental organizations; what percentage of PhDs becomes faculty member in its own department, or in other national or international departments, but this is a separate scientometric task beyond the scope of the current article.

#articles	#citations	$h$ -index
Mastorakis (105)	Kambourakis (919)	Kambourakis (18)
Kambourakis (103)	Mastorakis (504)	Mastorakis (12)
Belsis (50)	Kostis (424)	Bourdena (11)
Bourdena (42)	Bourdena (307)	Kostis (10)
Vassis (28)	Pliakas (197)	
Kostis (24)	Vassis (179)	
Makris (23)	Damopoulos (144)	
Miritzis (23)		
Tsohou (23)		
Kollias (21)	Makris (136)	
Karopoulos (19)	Kolias (128)	
Pliakas (18)	Tsohou (120)	

TABLE 10

Top-10 PhDs of the AEGEAN\_ICSD department.

#articles	#citations	$h$ -index
Tryfonas (93)	Halkidi (2134)	Doulkeridis (17)
Varlamis (67)	Eirinaki (911)	Vlachou (16)
Doulkeridis (64)	Doulkeridis (901)	Papadakis (15)
Oikonomou (55)	Vlachou (764)	Eirinaki (13) Papaioannou (13) Tryfonas (13)
Papadakis (53) Papaioannou (53)	Papadakis (541)	Halkidi (11) Kokolakis (11) Oikonomou (11)
Vlachou (50)	Varlamis (515)	Antoniadis (10) Karyda (10) Theocharidou (10) Tsatsaronis (10) Varlamis (10)
Kokolakis (46)	Papaioannou (489)	
Eirinaki (37) Theocharidou (37)	Ververidis (470)	
Fotiou (35)	Kokolakis (466)	
Frangoudis (33)	Fotiou (437)	

TABLE 11

Top-10 PhDs of the AUEB\_DI department.

Finally, Table 25 presents the top-50 PhDs based on impact. As expected we will recognize many current faculty members in national or international universities being in the top positions of this list.

Figure 7 presents the contribution of each department in populating the list of top-50, where NTUA\_ECE is the dominant department, and CRETE\_ECE has significant presence even though has not awarded many PhDs.

3. We do not present the list of faculty members here, but this information is readily available on the Internet.

#articles	#citations	<i>h</i> -index
Tefas (245)	Tsoumakas (2744)	Tefas (26)
Vakali (169)	Zafeiriou (2405)	Zafeiriou (25)
Zafeiriou (152)	Tefas (2363)	Nanopoulos (23)
Bassiliades (150)	Nanopoulos (2093)	Tsoumakas (21)
Nanopoulos (138)	Vakali (1981)	Katsaros, D. (19)
Mavromoustakis (129)	Katsaros D. (1767)	Bassiliades (18) Bors (18) Chatzigeorgiou (18) Vakali (18)
Nicopolitidis (126)	Pallis (1338)	Pallis (15) Papadopoulos, A. (15) Symeonidis (15)
Demetriadis (104) Papadopoulos, S. (104)	Chatzigeorgiou (1200)	Iosifidis (14)
Bors (101) Chatzigeorgiou (101)	Katakis (1189)	Mavromoustakis (13) Nicopolitidis (13) Papadopoulos, S. (13) Solachidis (13)
Katsaros, D. (93)	Bassiliades (1164)	Demetriadis (12) Tsekeridou (12) Ververidis (12)

TABLE 12  
Top-10 PhDs of the AUTH\_DI department.

#articles	#citations	<i>h</i> -index
Mezaris (167)	Michalopoulos (1453)	Michalopoulos (22)
Daras (151)	Mezaris (1366)	Sounas (20)
Sounas (108)	Sounas (1220)	Mezaris (17)
Moustakas (103)	Daras (1050)	Daras (15) Zografopoulos (15)
Athanasiadis (84)	Athanasiadis (817)	Athanasiadis (14) Moustakas (14)
Papadopoulos, T. (72)	Bechlioudis (789)	Chatzidiamantis (12) Thomos (12)
Zografopoulos (71)	Moustakas (748)	Polimeridis (11)
Michalopoulos (69)	Zografopoulos (611)	Kosmidou (10) Lioumpas (10) Papadopoulos, T (10) Tsilipakos (10)
Polimeridis (55)	Thomos (560)	
Zygidis (53)	Zoumas (549)	

TABLE 13  
Top-10 PhDs of the AUTH\_ECE department.

#articles	#citations	<i>h</i> -index
Siris (118)	Komodakis (2194)	Komodakis (22)
Spanoudakis (105)	Argyros (2100)	Argyros (19)
Argyros (101)	Petrakis (1617)	Spanoudakis (18)
Tzitzikas (98)	Siris (1427)	Lourakis (17) Siris (17)
Petrakis (93)	Spanoudakis (1210)	Polychronakis (16)
Zaboulis (86)	Lourakis (1068)	Petrakis (15)
Komodakis (83)	Polychronakis (879)	Antonatos (14)
Pappas (73)	Oikonomidis (847)	Zaboulis (13)
Bikakis (68)	Antonatos (683)	Flouris (12)
Polychronakis (66)	Kyriazis (665)	Kritikos (11) Panagiotakis (11) Tzitzikas (11)

TABLE 14  
Top-10 PhDs of the CRETE\_CSD department.

#articles	#citations	<i>h</i> -index
Kosmatopoulos (125)	Koutroulis (2809)	Kolokotsa (26)
Sakkalis (110)	Kosmatopoulos (2432)	Kosmatopoulos (25)
Rovithakis (103)	Kolokotsa (2263)	Koutroulis (20) Rovithakis (20)
Koutsakis (101)	Rovithakis (1788)	Dounis (18)
Kolokotsa (84)	Dounis (1102)	Sakkalis (14)
Kornaros (59)	Sakkalis (946)	Karipidis (13)
Koutroulis (56)	Karipidis (672)	Koutsakis (11)
Sfakianakis (52)	Koutsakis (345)	Tsinaraki (10)
Dounis (47)	Manolakis (322) Tsinaraki (322)	
Tryfonopoulos (40)	Raftopoulou (282)	

TABLE 15  
Top-10 PhDs of the CRETE\_ECE department.

#articles	#citations	<i>h</i> -index
Tsipouras (72)	Tsipouras (1186)	Tsipouras (17)
Rigas (61)	Tsoulos (481)	Tsoulos (14)
Papadopoulos (46) Stefanidis (46)	Stefanidis (405)	Rigas (13)
Tripoliti (44)	Rigas (349)	Stefanidis (11)
Tsoulos (43)	Plissiti (343)	
Karvelis (39)	Tzikas (294) Chantas (294)	
Tenentes (24)	Drosou (243)	
Voglis (23)	Constantinopoulos (242)	
Koloniari (22)	Papadopoulos (235)	
Sfikas (20)	Tripoliti (211)	

TABLE 16  
Top-10 PhDs of the IOAN\_CSE department.

#articles	#citations	<i>h</i> -index
Giannakos (104)	Giannakos (444)	Giannakos (10)
Alexiou (21)	Mikalaf (59)	
Mikalaf (20)	Pappas (53)	
Pappas (19)	Alexiou (40)	
Ringas (10)	Ringas (31)	
Giannakis (9)	Lapatas (7)	
Panaretos (6)	Kontzalis (6)	
Lapatas (5) Plerou (5) Psiha (5)	Giannakis (5) Psiha (5)	
Kontzalis (3)	Panaretos (4)	
NO OTHER PhDs	Plerou (2)	

TABLE 17  
Top-10 PhDs of the IONIO\_DI department.

such measures, namely, the number of published articles as the productivity measure, the number of citations as the impact measure, and the *h*-index [10] as a proxy for both productivity and impact.

For each department, we have calculated the median and average values for articles, citations, and *h*-index based on the respective PhDs' data. We emphasize at this point two issues: a) we recommend the *median as the most appropriate performance measure*, and b) when there are a lot of ties, then we consider the average value as the most credible performance measure. The reason is due to the nature of the underlying distributions of the number of published articles and received citations. These distributions are high-skewed, i.e., power-law, and a few individuals are responsible for the vast majority of the performance. For such distributions, the mean is not a representative measure; median is preferable. On the other hand, in cases with many ties, e.g., the *h*-index

## 6 RANKINGS OF DEPARTMENTS

There are several hundreds of bibliometric indicators [22] to describe different aspects of the research productivity and impact of a scientist, and then based on individuals' performance to describe organizations' performance, e.g., of a university. In this work, we have used the most common



#articles	#citations	h-index
Demestichas, P. (262)	Papadias (7099)	Papadias (44)
Panagopoulos A. (256)	Efremidis (4384)	Vlassis (28)
Maglogiannis (252)	Vlassis (3201)	Efremidis (26) Papathanassiou (26)
Doulamis, A. (224)	Papathanasiou (2853)	Simitsis (25)
Pleros (208)	Dimeas (2799)	Vassiliadis, Pan. (24)
Rigatos (199)	Kontopantelis (2674)	Avrithis (23) Georgilakis (23) Maglogiannis (23) Pleros (23)
Orfanelli (178)	Georgilakis (1996)	Avgeriou (21) Demestichas, P. (21) Rigatos (21)
Doulamis, N. (172)	Dalamagas (1857)	Doulamis, A. (20) Doulamis, N. (20) Vlachos (20) Zoiros (20)
Avgeriou (170)	Koziris (1783)	Doukas (19) Kokkinos (19) Koziris (19)
Sygetos (167)	Maglogiannis (1777)	Anagnostopoulos (18) Igomienidis (18) Paliatsos (18) Panagopoulos A. (18) Peppas (18)

TABLE 18  
Top-10 PhDs of the NTUA\_ECE department.

#articles	#citations	h-index
Soudris (367)	Karagiannidis (6561)	Karagiannidis (43)
Karagiannidis (354)	Andrikopoulos (2539)	Papageorgiou (25)
Fakotakis (200)	Tsiftsis (2455)	Stylios (24) Tsiftsis (24)
Magoulas (159)	Papageorgiou (2335)	Andrikopoulos (22) Magoulas (22)
Koufopavlou (151)	Stylios (2245)	Fakotakis (19) Stamatatos (19)
Andrikopoulos (150)	Magoulas (2015)	Koufopavlou (17) Nikolakopoulos (17)
Nikolaïdis (144)	Stamatatos (1468)	Sklavos (16)
Nikolakopoulos (138) Papageorgiou (138)	Fakotakis (1434)	Alexis (15) Kalis (15)
Stylios (136)	Antonakopoulos (1230)	Soudris (14) Zogas (14)
Paliouras (109)	Koufopavlou (1111)	Ganchev (13) Logothetis (13) Potamitis (13)

TABLE 19  
Top-10 PhDs of the PATRAS\_ECE department.

#articles	#citations	h-index
Monovasilis (60)	Giannopoulou (1638)	Anastassi (21)
Anastassi (58)	Anastassi (1164)	Giannopoulou (16) Monovasilis (16)
Papadopoulos (40)	Monovasilis (906)	Papadopoulos (12)
Uzunidis (35)	Papadopoulos (813)	Panopoulos (10)
Giannopoulou (34)	Sakas (233)	
Rizos (33)	Panopoulos (186)	
Vasiliadis (32)	Kosti (174)	
Sakas (29)	Tselios (137)	
Antoniou (21)	Rizos (77)	
Kosmas (18)	Vasiliadis (76)	

TABLE 20  
Top-10 PhDs of the PELOP\_DI department.

#articles	#citations	h-index
Bogris (166)	Bogris (2057)	Bogris (24)
Anagnostopoulos (85)	Argyris (1578)	Koutrika (19)
Koutrika (75)	Koutrika (1492)	Argyris (17)
Argyris (71)	Passalis (832)	Christodoulou (14) Passalis (14) Stamatopoulos (14)
Kapsalis (68)	Christodoulou (742)	Tsigaridas (13)
Simos (59)	Papadimitropoulos (610)	Anagnostopoulos (12) Kranitis (12) Louloudis (12) Papadimitropoulos (12) Simos (12)
Bouboulis (57) Giannakopoulos (57)	Anagnostopoulos (579)	Ntirogiannis (11)
Koumaras (51)	Ntirogiannis (532)	Bouboulis (10) Giannakopoulos (10) Mavroforakis (10) Papadakis (10)
Tsigaridas (50)	Stamatopoulos (529)	
Cutsuridis (49)	Papadakis (500)	

TABLE 21  
Top-10 PhDs of the UA\_DI department.

#articles	#citations	h-index
Alepis (70)	Mitrokosta (704)	Mitrokosta (14)
Mitrokosta (63) Patsakis (63)	Kotzanikolaou (469)	Kotzanikolaou (12)
Kambasi (60)	Frentzos (456)	Frentzos (11)
Kotzanikolaou (53)	Poulos (406)	Ntoutsis (10)
Poulos (50)	Ntoutsis (394)	
Lambropoulos (40) Magkos (40)	Nikolidakis (391)	
Vosinakis (38)	Katsionis (331)	
Papadakis (32) Stathopoulou (32)	Alepis (289)	
Sotiropoulos (27)	Patsakis (276)	
Ntoutsis (26)	Giatrakos (274)	

TABLE 22  
Top-10 PhDs of the UNIPDI department.

#articles	#citations	h-index
Tasoulis (25)	Dimou (206)	Dimou (5)
Xanthis (16)	Tasoulis (63)	
Moutselos (13)	Moutselos (62)	
Dimou (11)	Xanthis (32)	
Haralabopoulos (4) Kontou (4)	Haralabopoulos (11)	
NO OTHER PhDs	Kontou (5)	

TABLE 23  
Top-10 PhDs of the UTH\_DIB department.

strong and obvious result is that there is a 'winner' department, namely CRETE\_ECE, and the other two positions in top-3 are occupied by AUTH\_DI and CRETE\_CSD. We were not surprised to see the 'Cretan' departments in the top positions, even though they are 'peripherals'. We had established the research excellence of CRETE\_CSD's faculty in our past work [12], and here we confirm their steady dedication to breathe their excellence into their PhD students.

Focusing on median citation-based impact, which we consider a rather *stable and very significant* performance measure, it is promising to see 'peripheral' departments, namely AEGEAN\_ICSD and IOAN\_CSE to be located immediately after the top-3 and to overcome almost all (except from AUTH\_DI) 'central' departments.

case, then the average values can be used for comparison purposes.

The results are presented in Tables 26–28. The most

#articles	#citations	<i>h</i> -index
Korakis (139)	Korakis (1419)	Korakis (17)
Gkoulalas-Divanis (65)	Georgakilas (1096)	Gkoulalas-Divanis (14)
Iosifidis (47)	Paraskevopoulou (818)	Iosifidis (13)
Sourlas (43)	Gkoulalas-Divanis (663)	Axenopoulos (12)
Maglaras (35)	Iosifidis (477)	Sourlas (11)
Tziritis (35)		
Athanasίου (32)	Axenopoulos (404)	
Axenopoulos (30)	Sourlas (350)	
Syrivelis (30)		
Katsalis (23)	Gkatzikis (250)	
Gkatzikis (22)	Athanasίου (187)	
Poularakis (22)		
Keranidis (20)	Poularakis (183)	
Choumas (20)		

TABLE 24  
Top-10 PhDs of the UTH\_ECE department.

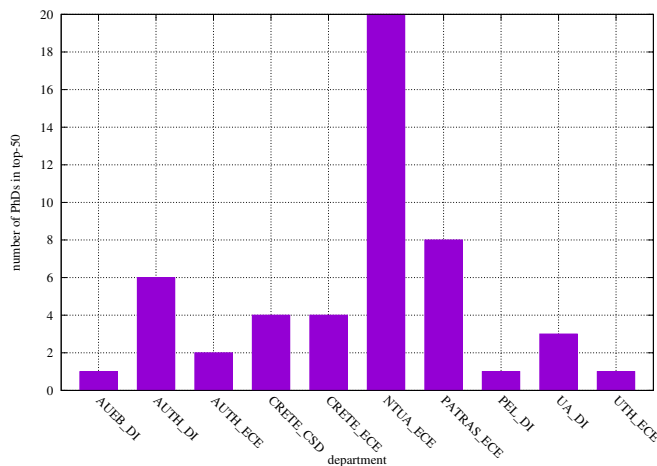


Fig. 7. Departments' contributions in top-50 impactful PhDs.

The 'large', old engineering departments, namely AUTH\_ECE, NTUA\_ECE and PATRAS\_ECE have moderate performance both in terms of productivity and impact, and are located at the middle of the ranking lists when examining their median values. Their performance is slightly better with respect to the average values. An interesting observation is that they perform rather bad with respect to the average *h*-index, which can be explained by the performance of their individual PhDs, i.e., very few of them have quite large *h*-index, and the vast majority of PhDs has a single-digit *h*-index value.

## 7 DATA COLLECTION

It is worth mentioning that very few departments maintain publicly accessible *electronic* files for their PhD graduates, namely AEGEAN\_ICSD [1], CRETE\_CSD [24], UA\_DI [23], and UTH\_ECE [25]. Moreover, some departments do not maintain *electronic* files at all for their graduates. Thus, we asked for data – via our colleagues – from the administrative staff of the departments. Unfortunately, not all administrations were able to provide assistance.

We decided to gather the performance data from Scopus instead of Google Scholar or ISI Web of Science. There exist rich literature comparing these bibliographic databases, see for instance [4]. Our main criterion was that Scopus database is cleansed, and it contains both journal and conference

1	Papadias	NTUA_ECE
2	Karagiannidis	PATRAS_ECE
3	Efremidis	NTUA_ECE
4	Vlassis	NTUA_ECE
5	Papathanasiou Stav.	NTUA_ECE
6	Koutroulis	CRETE_ECE
7	Dimeas	NTUA_ECE
8	Tsoumakas	AUTH_DI
9	Kontopantelis	NTUA_ECE
10	Andirkopoulos	PATRAS_ECE
11	Tsiftsis	PATRAS_ECE
12	Kosmatopoulos	CRETE_ECE
13	Zafeiriou	AUTH_DI
14	Tefas	AUTH_DI
15	Papageorgiou Elp.	PATRAS_ECE
16	Kolokotsa	CRETE_ECE
17	Stylios	PATRAS_ECE
18	Komodakis	CRETE_CSD
19	Halkidi	AUEB_DI
20	Argyros	CRETE_CSD
21	Nanopoulos	AUTH_DI
22	Bogris	UA_DI
23	Magoulas	PATRAS_ECE
24	Georgilakis	NTUA_ECE
25	Vakali	AUTH_DI
26	Dalamagas	NTUA_ECE
27	Rovithakis	CRETE_ECE
28	Koziris	NTUA_ECE
29	Maglogiannis	NTUA_ECE
30	Katsaros D.	AUTH_DI
31	Vassiliadis	NTUA_ECE
32	Simitsis	NTUA_ECE
33	Vergoulis	NTUA_ECE
34	Pleros	NTUA_ECE
35	Avgeriou	NTUA_ECE
36	Giannopoulou Evg.	PEL_DI
37	Demestichas	NTUA_ECE
38	Petrakis	CRETE_CSD
39	Argyris	UA_DI
40	Tsapatsoulis	NTUA_ECE
41	Panagopoulos	NTUA_ECE
42	Koutrika	UA_DI
43	Stamatatos	PATRAS_ECE
44	Avrithis	NTUA_ECE
45	Michalopoulos	AUTH_ECE
46	Fakotakis	PATRAS_ECE
47	Siris	CRETE_CSD
48	Korakis	UTH_ECE
49	Doulamis A.	NTUA_ECE
50	Mezaris	AUTH_ECE

TABLE 25  
Top-50 PhDs across all departments according to the total number of citations.

publications, which is significant to our study taking into account that conference publications are considered equally important in computer science [19], [29] compared to other disciplines. Especially for Google Scholar, analysis of literature [9] concludes that it currently lacks quality control, clear indexing guidelines, and it can be easily manipulated.

We collected our data mostly manually (by browsing and searching). Scopus provides an API for retrieving data, but the offered data are not as up-to-date<sup>4</sup> as those returned to user browsing. Manual data collection turned out to be the fastest and most effective method. Should we have

4. The following information is undocumented. There are two different databases that Scopus uses, one for the Web, and one for the API, and they do not return the same data. It is close, but not the same; the API database may not be updated as quickly as the Web database.

Department	median #articles	Department	avg #articles
CRETE_ECE	20	AUTH_DI	32.6
AUTH_DI	18	CRETE_ECE	31.1
CRETE_CSD	18	CRETE_CSD	28.6
UTH_ECE	15	PATRAS_ECE	25.0
AEGEAN_ICSD	14	NTUA_ECE	21.7
PELOP_DI	14	AEGEAN_ICSD	20.6
AUTH_ECE	13	PELOP_DI	19.7
IOAN_CSE	13	UTH_ECE	19.7
PATRAS_ECE	13	AUTH_ECE	19.4
UTH_DIB	12	IONIO_DI	18.8
NTUA_ECE	11	IOAN_CSE	18.0
UA_DI	11	UA_DI	17.4
AUEB_DI	10	AUEB_DI	17.2
IONIO_DI	9	UNIPDI	12.8
UNIPDI	7	UTH_DIB	12.2

TABLE 26

Ranking departments by median and average productivity.

Department	median #citations	Department	avg #citations
CRETE_ECE	125	CRETE_ECE	380.9
AUTH_DI	125	AUTH_DI	312.7
CRETE_CSD	120	CRETE_CSD	292.3
AEGEAN_ICSD	79	PELOP_DI	250.7
IOAN_CSE	73	PATRAS_ECE	186.0
UA_DI	70	NTUA_ECE	178.4
AUTH_ECE	63	AUEB_DI	173.4
PATRAS_ECE	63	UTH_ECE	171.2
NTUA_ECE	54	IOAN_CSE	151.0
PELOP_DI	53	AUTH_ECE	150.0
UTH_ECE	50	UA_DI	146.5
AUEB_DI	47	AEGEAN_ICSD	131.2
UTH_DIB	47	UNIPDI	83.7
UNIPDI	19	UTH_DIB	63.2
IONIO_DI	7	IONIO_DI	59.6

TABLE 27

Ranking departments by median and average impact.

Department	median <i>h</i> -index	Department	avg <i>h</i> -index
CRETE_ECE	6	CRETE_ECE	7.5
AUTH_DI	5	AUTH_DI	6.9
CRETE_CSD	5	CRETE_CSD	6.7
AEGEAN_ICSD	4	PELOP_DI	5.7
AUEB_DI	4	AEGEAN_ICSD	5.3
AUTH_ECE	4	IOAN_CSE	5.3
IOAN_CSE	4	AUEB_DI	5.0
NTUA_ECE	4	AUTH_ECE	5.0
PATRAS_ECE	4	PATRAS_ECE	5.0
PELOP_DI	4	UA_DI	5.0
UA_DI	4	NTUA_ECE	4.9
UTH_DIB	4	UTH_ECE	4.8
UTH_ECE	4	UTH_DIB	3.5
UNIPDI	3	UNIPDI	3.4
IONIO_DI	2	IONIO_DI	3.2

TABLE 28

Ranking departments by median and average *h*-index.

used Scopus 'Search Form' to search for a specific PhD, then we would have very frequently faced the case, where the Scopus maintains different profiles for persons with exactly the same name, making the disambiguation more time-consuming. Thus, we started our browsing from a supervisor's profile which was relatively easy to discover, because of the wealth of publications s/he has accumulated over the years. Then, we sought for the names of his/her PhDs. This methodology allowed us to detect the correct

PhD's profile in the vast majority of the cases. A first problem arose with the existence of what we call the 'mixed profiles'; a mixed profile is a single Scopus profile which contains articles belonging to different persons – who share exactly the same name though. We had to manually and very carefully cleanse such profiles (performing joins with other bibliographic databases), because their impact on the final data could be dramatic. For instance, NTUA\_ECE's PhD Ioannis Konstantinou<sup>5</sup> shares a profile with others, and despite the fact<sup>6</sup> that he has written 27 articles gathering a total of 219 citations, his mixed profile mentions 163 articles and 6129 citations. Similar cases appear for AUEB\_DI's PhD George Tsatsaronis, recording 286 articles and 5074 citations instead of the 'correct' 32 articles and 382 citations, for CRETE\_CSD' Maria Markaki, and so on. However, there were many cases where the supervisor had no joint publications with some of his/her PhDs. We even encountered a case where the supervisor had no joint publications with any of his PhDs(!). In this case, we had no alternative but to use Scopus 'Search Form', and deal with author disambiguation and mixed profiles issues.

The profile data used in this study, i.e., number of publications, number of citations and *h*-index of each PhD, were retrieved by the respective Scopus profiles during the days June 24-25, 2017. As far as we can tell, there were no updates in the Scopus database during these days, so the information gathered for all PhDs concerns the same 'database instance'. An exception to the collection dates is the UNIPDI whose data were collected in July 3rd. During this week there was a Scopus update, thus this department is slightly benefitted. However, since it performed moderately in the rankings, there is no substantial argument against the validity of the data as a whole. We need to emphasize here, that the Scopus profiles were discovered and processed (to perform author disambiguation, to cleanse 'mixed' profiles) in earlier time; during the aforementioned days, we just retrieved the data of interest. Despite the breadth (in areas) and depth (in years) of the Scopus database, we could not find all PhDs Scopus profiles. Table 29 shows the (approximate) percentage of missed profiles in our study. This is due to one or a combination of the following reasons: a) some PhDs have no profile at all in Scopus, because they have published no article(!) in any forum, i.e., journal or conference or collection indexed by Scopus (this holds for both recent, after 2005, and older, before 2000 PhDs); b) the articles of some PhD are quite old (around 1995) and the Scopus data are sparse for this period; c) the authors of the present article were not able to do proper browsing and/or form an appropriate query to find the profile – this is due to the really very different ways used by PhDs to spell their names, for instance 'John' versus 'Ioannis' versus 'Giannis' versus 'Yannis' <sup>7</sup>, 'Cutsuridis' versus 'Koutsouridis', 'Economou' versus 'Oikonomou', 'Konstantinopoulos' versus 'Constantinopoulos', 'Sigletos' versus 'Sygletos, and so on. Nevertheless, the missed profiles comprise a very small part of the total profiles, and we are confident that missing them will not affect the obtained results.

5. <https://www.scopus.com/authid/detail.uri?origin=AuthorProfile&authorId=6603935934&zone=>

6. At the time of collecting the data for this article.

7. But, not 'Yanis' (with one 'n').

Department	% missing PhDs Scopus profiles
AEGEAN_ICSD	0%
AUEB_DI	3.90%
AUTH_DI	1.53%
AUTH_ECE	1.16%
CRETE_CSD	1.33%
CRETE_ECE	0%
IOAN_CSE	0%
IONIO_DI	0%
NTUA_ECE	4.15%
PATRAS_ECE	2.05%
PELOP_DI	0%
UA_DI	0%
UNIPI_DI	6.82%
UTH_DIB	0%
UTH_ECE	0%

TABLE 29

Percentage of PhDs Scopus profiles not available per department.

## 8 RELATED WORK

There exist several articles whose focus is the evaluation of Hellenic universities faculty's research quality using bibliometric data. After our pioneering work [12], many articles evaluated national departments of computer science/engineering [3], [21] (or international [2], [7]), national chemical engineering departments [14], [17], national civil engineering departments [13], economics departments [11], medical schools [15], or national and international departments from various – such as pedagogical, technological, political science, sociology, marketing – disciplines [3], [20], [26], [27].

To our knowledge this is the first article focusing in the evaluation of university departments' PhD research programmes under the prism of productivity and impact quantification of the research work conducted in the 'scientific lifetime' of their former PhDs. The latent hypothesis of this article is that the research capacity of a PhD is (partly or significantly) shaped during his PhD studies.

## 9 CONCLUSIONS

This article has conducted a bibliometric evaluation of 15 departments of computer science/engineering of Hellenic universities. As a conclusion to the article we would like to record only the three most significant findings of our study: a) there is no correlation among graduation time and impact of the work of a PhD, b) there is no evident<sup>8</sup> correlation among productivity and impact either in the supervisors or in the PhDs realm, and finally c) there is a clear 'winner' department across all our measures, and that is CRETE\_ECE, followed by AUTH\_DI and CRETE\_CSD.

### Acknowledgements

The authors are indebted to the following people who offered invaluable help in providing access to raw data concerning PhD graduates of their department: Vassilios Dimakopoulos, Apostolos Dollas, Rania Doufexi, Vana Doufexi, Ioannis Fudos, Antigoni Galanaki, Vicky Grigoraki, Dimitris Gritzalis, George Hassapis, Yannis Ioannidis,

8. In a future study, this can be accurately quantified.

Elma Kalogeraki, Mary Karasimou, Sofia Kataki, Nectarios Koziris, Elena Laskari, Kity Loupa, Grigoris Papagianis, Antonis Paschalis, Vassilis Plagianakos, Spyros Sioutas, Spiros Skiadopoulos, Angeliki Spyrou, George D. Stamoulis, George Tsihrintzis, Dimitrios Vlachos, Michalis Zervakis. The first author wishes to thank Nikos Bellas, his colleague at the Department of Electrical and Computer Engineering of the University of Thessaly, whose thought-provoking comments and observations motivated the present work.

## REFERENCES

- [1] Information & Communications Systems Engineering department of the Aegean University. Available at [http://www.icsd.aegean.gr/icsd/metaptyxiaka/phd\\_diplomatikes.php](http://www.icsd.aegean.gr/icsd/metaptyxiaka/phd_diplomatikes.php). Retrieved April 20th, 2017.
- [2] H. S. Al-Khalifa. Scientometric assessment of Saudi publication productivity in computer science in the period of 1978-2012. *International Journal of Web Information Systems*, 10(2):194–208, 2014.
- [3] P. Altanopoulou, M. Donsidou, and N. Tselios. Evaluation of ninety-three major Greek university departments using Google Scholar. *Quality in Higher Education*, 18(1):111–137, 2012.
- [4] J. Bar-Ilan. Which *h*-index? A comparison of WoS, Scopus and Google Scholar. *Scientometrics*, 74(4):257–271, 2008.
- [5] A.-L. Barabasi and R. Albert. Emergence of scaling in random networks. *Science*, 286:509–512, 1999.
- [6] A.-L. Barabasi, R. Albert, H. Jeong, and G. Bianconi. Power-law distribution of the World Wide Web. *Science*, 287:2115, 2000.
- [7] V. Garousi and T. Varma. A bibliometrics analysis of Canadian Electrical and Computer Engineering Institutions (1996–2006) based on IEEE journal publications. *Computer and Information Science*, 5(4), 2012.
- [8] Y. Gingras. *Bibliometrics and Research Evaluation: Uses and Abuses*. The MIT Press, 2016.
- [9] G. Halevi, H. Moed, and J. Bar-Ilan. Suitability of Google Scholar as a source of scientific information and as a source of data for scientific evaluation – Review of the literature. *Journal of Informetrics*, 11(3):823–834, 2017.
- [10] J. E. Hirsch. An index to quantify an individual's scientific research output. *Proceedings of the National Academy of Sciences*, 102(46):16569–16572, 2005.
- [11] S. Katranidis, T. Panagiotidis, and C. Zontanos. An evaluation of the Greek universities' economics departments. *Bulletin of Economic Research*, 66(2):173–182, 2014.
- [12] D. Katsaros, V. Matsoukas, and Y. Manolopoulos. Evaluating Greek departments of computer science & engineering using bibliometric indices. In *Proceedings of the Panhellenic Conference on Informatics (PCI)*, pages 83–92, 2008.
- [13] N. A. Kazakis. Bibliometric evaluation of the research performance of the Greek civil engineering departments in national and european context. *Scientometrics*, 101(1):505–525, 2014.
- [14] N. A. Kazakis. The research activity of the current faculty of the Greek chemical engineering departments: A bibliometric study in national and international context. *Scientometrics*, 103(1):229–250, 2015.
- [15] N. A. Kazakis, D. A. Diamantidis, L. L. Fragidis, and M. K. Lazarides. Evaluating the research performance of the Greek medical schools using bibliometrics. *Scientometrics*, 98(2):1367–1384, 2014.
- [16] M. G. Kendall. A new measure of rank correlation. *Biometrika*, 80:81–93, 1938.
- [17] T. Lazaridis. Ranking university departments using the mean *h*-index. *Scientometrics*, 82(2):211–216, 2010.
- [18] Y. Manolopoulos and D. Katsaros. Metrics and rankings: Myths and fallacies. In *Data Analytics and Management in Data Intensive Domains*, volume 706 of *Communications in Computer and Information Science*, pages 265–280. Springer, 2017.
- [19] B. Meyer, C. Choppy, J. Staunstrup, and J. van Leeuwen. Research evaluation for computer science. *Communications of the ACM*, 52(4):31–34, 2009.
- [20] A. Miroiu, M. Paunescu, and G. A. Viuu. Ranking Romanian academic departments in three fields of study using the *g*-index. *Quality in Higher Education*, 21(2):189–212, 2015.

- [21] M. Pitsolanti, F. Papadopoulou, and N. Tselios. Evaluation of 50 Greek science and engineering university departments using Google Scholar, 2017. Available at: <https://arxiv.org/abs/1703.04478>.
- [22] R. Todeschini, , and A. Baccini. *Handbook of Bibliometric Indicators: Quantitative Tools for Studying and Evaluating Research*. Wiley, 2016.
- [23] Department of Informatics & Telecommunications of the University of Athens. Available at <http://cgi.di.uoa.gr/~phdsbook/gr/index.shtml>. Retrieved April 20th, 2017.
- [24] Computer Science Department of the University of Crete. Available at [https://www.csd.uoc.gr/index.jsp?content=awarded\\_degrees&openmenu=demoAcc4&lang=gr#2](https://www.csd.uoc.gr/index.jsp?content=awarded_degrees&openmenu=demoAcc4&lang=gr#2). Retrieved April 20th, 2017.
- [25] Electrical & Computer Engineering department of the University of Thessaly. Available at <https://www.e-ce.uth.gr/alumni/phd-graduates/>. Retrieved April 20th, 2017.
- [26] N. M. Vaxevanidis. Quality assurance in Greek HEIs: Convergence or divergence with European models? In J. P. Davim, editor, *Mechanical Engineering Education*, pages 1–60. Wiley, 2012.
- [27] N. M. Vaxevanidis, H. Despotidi, H. Prokopiou, and A. Koutsomichalis. On the evaluation of the quality of research in Greek HEIs using bibliometric indices. *International Journal for Quality Research*, 5(4):247–254, 2011.
- [28] N. K. Vitanov. *Science Dynamics and Research Production: Indicators, Indexes, Statistical Laws and Mathematical Models*. Springer, 2016.
- [29] G. Vrettas and M. Sanderson. Conferences versus journals in computer science. *Journal of the Association for Information Science and Technology*, 66(12):2674–2684, 2015.



**Dimitrios Katsaros** is assistant professor in the Department of Electrical and Computer Engineering at the University of Thessaly. Katsaros can be reached at [dkatsar@e-ce.uth.gr](mailto:dkatsar@e-ce.uth.gr) or [d.katsaros@yale.edu](mailto:d.katsaros@yale.edu)



**Yannis Manolopoulos** is professor in the Department of Informatics at Aristotle University of Thessaloniki. Manolopoulos can be reached at [manolopo@csd.auth.gr](mailto:manolopo@csd.auth.gr)